

12—Cuckoo Bee

Size: tiny, small, medium to large.

Color: black, cream, yellow, red, and/or silver.

Note: can have contrasting, wasp-like patterns.

RED ABDOMEN



SMALL



LARGE



© Tom Murray

© Ron Hembarger

© Rolin Coville

10—Striped Hairy Belly Bee

Size: tiny to small/medium.

Color: black with white/silvery hairs.

Hair: brushes of hair on underside of abdomen for pollen.

Striping: often have white bands on abdomen.

Hairs on abdomen



SMALL/MEDIUM



TINY



© Whitney Cranshaw/Bugwood.org

© Rolin Coville

© Rolin Coville

8—Striped Sweat Bee

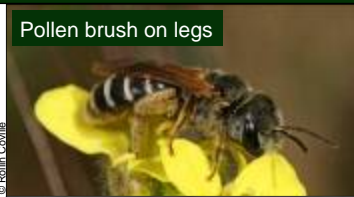
Size: small to medium.

Color: black, cream, and/or dark gray.

Stripes: creamy to dark gray stripes on abdomen; stripes may be faint.

Hair: brush of hair on hind legs, sometimes loaded with pollen, but abdomen may look smooth.

Pollen brush on legs



Stripes may be faint



SMALL



MEDIUM



© Rolin Coville

© Derrick Dittmann

© Rolin Coville

California Pollinator Project

Citizen Scientist Monitoring Pocket Guide



The Xerces Society for Invertebrate Conservation
University of California at Berkeley

© Rolin Coville

3—Honey Bee

Size: medium to large

Color: orangish/brown/yellow to nearly black

Stripes: on abdomen.

Pollen: carries moist pollen in clumps on hind legs.

Range of colors



Flat hind leg



Moist pollen load



USDA ARS Scott Bauer

© Rolin Coville

© Bill May

5—Large Carpenter Bee

Size: very large.

Color: black or bronze.

Hair: body mostly shiny, males can have a hairy thorax.

Pollen: collects dry pollen in brush of hair on leg.

Female



Male



Male



© Ron Hembarger

© Rolin Coville

© Rolin Coville

2—Bees vs. Wasps vs. Flies

Bees

- usually hairy.
- large load of pollen.
- four wings (two pairs).
- long, elbowed antennae

Wasps

- not hairy.
- patterns on exoskeleton.
- four wings (two pairs).
- long antennae.

Flies

- short thick antennae.
- two wings (one pair).



© Edward S. Ross



© Whitney Camshaw, Bugwood.org



© Mace Vaughan

11—Metallic Hairy Belly Bee

Size: small to medium.

Color: metallic green, blue, or bluish black.

Hair: brushes of hair beneath abdomen for pollen.

Body type: stout.

BLUE

USDA/ARS/Jack D. King

GREEN

© Mace Vaughan

4—Bumble Bees

Size: medium to very large.

Color: black, yellow, and/or orange.

Hair: entire body fuzzy.

Pollen: moist pollen in clumps on hind legs.

FOUR STRIPES



© Rollin Coville

BLACK FACE



© Edward S. Ross

YELLOW FACE



© Rod Gilbert

ORANGE TIP



© Edward S. Ross

YELLOW BODY



© Edward S. Ross

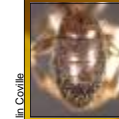
9—Tiny Dark Bee

Size: tiny to small.

Color: black, metallic green-grey, metallic blue, and/or brown.

Hair: brushes of hair on hind leg, sometimes with pollen.

ROUND TIP



© Rollin Coville

SHIELD TIP



© Rollin Coville

YELLOW FACE AND WASP-LIKE



© Rollin Coville

6—Hairy Leg Bee

Size: medium to large.

Color: brown, black, yellow, grey.

Hair: often hairy, especially on thorax; velvet-like.

Pollen: dry pollen on leg

Stripes: may have striped abdomen.

Antennae: may have long antennae.

Hairy



© Rollin Coville

Dry pollen



© Edward S. Ross

Long antennae on some males



© Rollin Coville

7—Green Sweat Bee

Size: medium.

Color: metallic green (sometimes with striped abdomen)

Body type: narrow.

Note: Some Mason Bees and Wasps are green. Look to see whether the green visitor is a bee or not and then look to see where it is carrying pollen or where it is hairy.

Bright green



© Rollin Coville

Dry pollen on leg



© Rollin Coville

Male



© Rollin Coville