

## About Bee Campus USA

Bee Campus USA is creating a nationwide network of hundreds of communities rallying to protect pollinators with a focus on supporting native species. Each college or university makes a commitment to create habitat, reduce pesticide use, and educate the public. Collectively, Bee Campus USA schools have created thousands of acres of new habitat, protected pollinators from pesticides, and reached nearly half a million of people with the message of caring for our planet.

Bee Campus USA is run by the Xerces Society for Invertebrate Conservation, which provides information, materials, and advice. Each Bee Campus works independently and its projects are unique and reflect its own strengths, interests, and needs.

## Who Can Become an Affiliate of Bee Campus USA?

University and post-high school colleges can become certified affiliates of Bee Campus USA. Learn more at [beecampususa.org](http://beecampususa.org). Bee Campus USA is part of the wider Bee City USA program, which works with incorporated municipalities and unincorporated counties.

If you don't fit into one of these categories but would like to help native pollinators, you can still get involved by taking the Xerces Society's Bring Back the Pollinators Pledge at [bringbackthepollinators.org](http://bringbackthepollinators.org).



There are steps we can all take to make our garden, neighborhood, or hometown better for bees. By joining Bee Campus USA, you can unite your school to increase habitat, reduce pesticide use, and spread awareness—and become part of a nationwide movement to protect pollinators.

Thank you!

Get more information about becoming a certified Bee Campus USA affiliate at [beecampususa.org](http://beecampususa.org)

Contact us with questions about the application and certification process at [beecityusa@xerces.org](mailto:beecityusa@xerces.org)

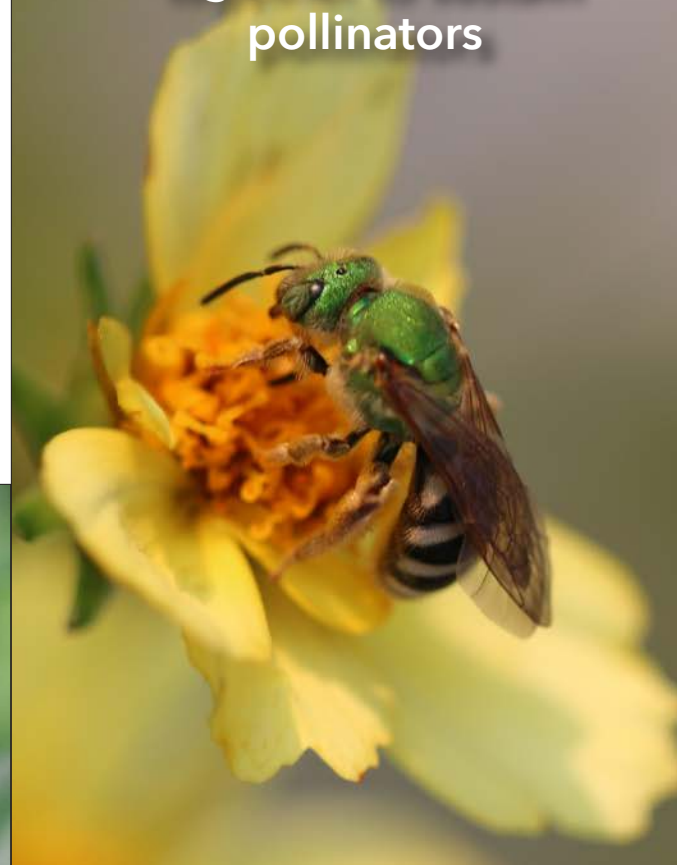


Bee Campus USA™ is an initiative of the Xerces Society for Invertebrate Conservation, a donor-supported nonprofit that protects the natural world through the conservation of invertebrates and their habitats. Xerces works to build habitat, protect endangered species, and reduce pesticide use and impacts. Our success depends on your involvement. Take action today for your favorite invertebrates by making a tax-deductible donation at [xerces.org/donate](http://xerces.org/donate).

The Xerces Society is an equal opportunity employer and provider. Xerces® is a trademark registered in the U.S. Patent and Trademark Office.



Bringing communities together to sustain pollinators





## Why Protect Pollinators?

Bees are at the heart of a healthy environment. We can thank them for the reproduction of nearly 85% of all flowering plants, including crops that give us one in three bites of food we eat! Butterflies, moths, beetles, flies, wasps, ants, bats, hummingbirds, and more also pollinate, but bees are the most important pollinators.

It might seem that bees are everywhere, but many are in decline due to habitat loss, the use of harmful pesticides, disease, and climate change. We need pollinators, so we should do all we can to ensure that they have safe habitat.

## Did You Know?

- There are more than 3,600 bee species in the United States.
- 90% of bees are solitary-nesting, meaning they do not live in a hive.
- 70% of bees nest in tunnels in the ground, with the rest occupying a hollow stem or similar space.
- Over 40% of native pollinator species are in decline worldwide, with some at risk of extinction.



## Benefits to Your School

- **Beautiful landscaping, resilient schools:** Flowering habitat enhances your school and support the pollinators vital to the health of our world.
- **Help meet campus sustainability & climate goals:** Native plants reduce water and chemical inputs and habitat helps lock up carbon.
- **Healthier campuses:** Reducing harmful pesticides and adopting least-toxic ways to tackle pest problems makes campuses safer.
- **Healthier students:** Contact with nature improves emotional and mental health.
- **Stronger community:** Bring students, faculty, and staff together around a shared cause and connect with schools across the country that share the same vision.
- **Support local farmers:** Raise awareness of how our food grows and improve local food production through increased pollination.
- **Grow small businesses:** Help local businesses including native plant nurseries, pollinator-friendly landscapers, and other bee-friendly businesses.
- **Mailed welcome package:** Get immediate access to free pollinator conservation and outreach resources.
- **Access to training opportunities & support:** Learn from Xerces' team of pollinator conservation experts.
- **Two (2) Grounds Certification Exemplary Practice Credits** in the Association for the Advancement of Sustainability in Higher Education (AASHE)'s Sustainability Tracking, Assessment & Rating System™ (STARS) system.



## Commitments

What does becoming a Bee Campus USA entail for a college or university? First and foremost, Bee Campus USA affiliates make a commitment to make their school a better place for pollinators by creating habitat, reducing pesticides, and doing outreach. The highest administrator must approve this commitment. Students, faculty, administrators, and staff work together to:

- Establish a Bee Campus USA committee to lead the pollinator-conservation efforts.
- Create and enhance pollinator habitat by planting native plants and reducing pesticide use.
- Add pollinator-friendly practices into campus pest management plans.
- Host annual pollinator events.
- Offer courses or continuing education opportunities that incorporate pollinator conservation.
- Offer service-learning projects to enhance habitat.
- Publicly acknowledge Bee Campus USA affiliation with signs and an online presence.
- Annually apply for renewal and report on the previous year's activities.
- Pay an initial application fee and annual renewal fee.



Xerces staff support Bee Campus USA affiliates and provide information and guidance to help you meet these requirements.

Applications are accepted year-round. Learn more about the Bee Campus USA program, read answers to frequently asked questions, and find out how to apply at [beecampususa.org](http://beecampususa.org).

